

336 DAVENPORT ROAD, TORONTO

Erin Ashby

Sales Representative

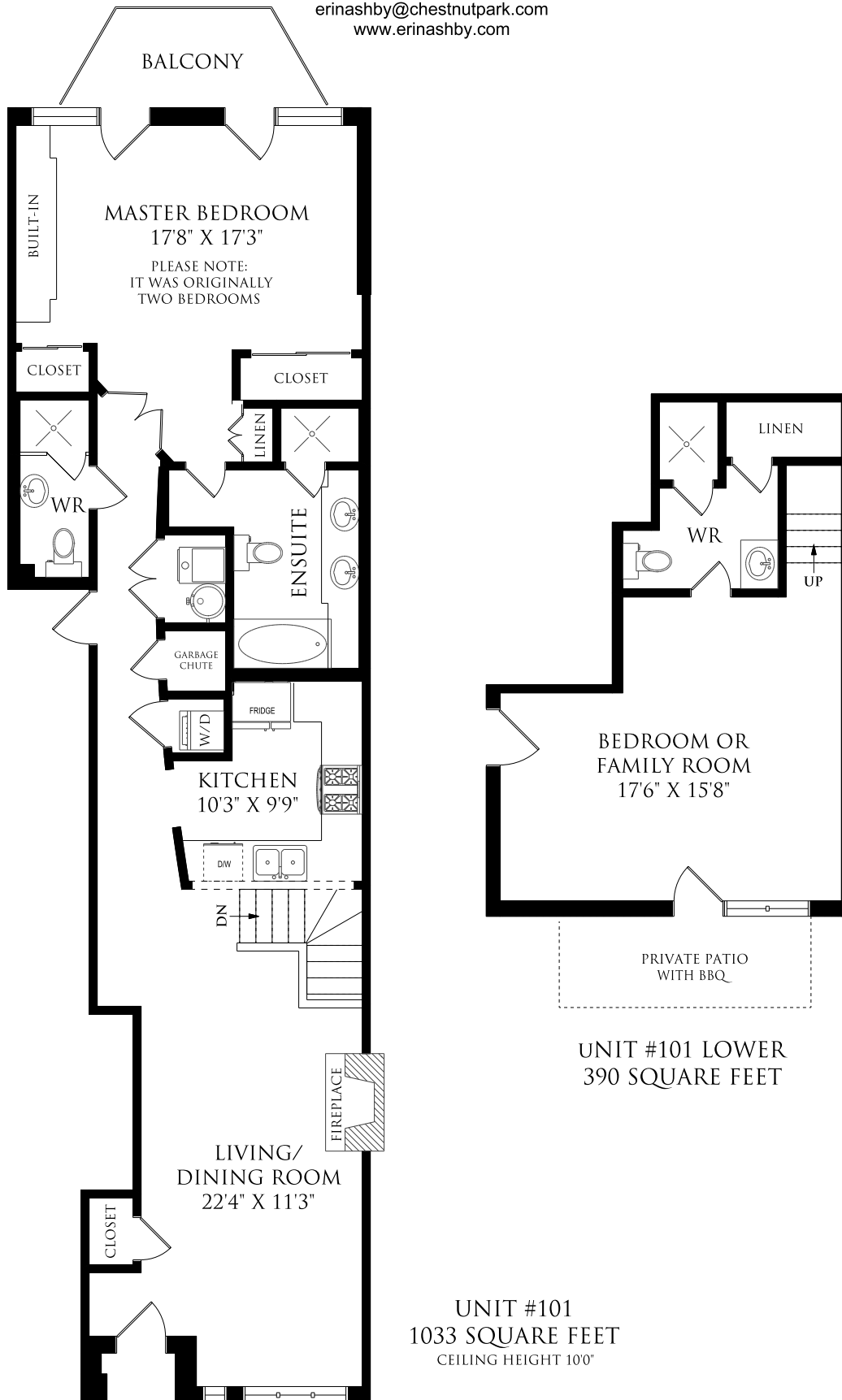
Chestnut Park Real Estate Limited, Brokerage

416.925.9191 - Office

416.276.4849 - Mobile

erinashby@chestnutpark.com

www.erinashby.com



Wednesday, June 28, 2017

Note: Although measurements and area believed to be accurate they should be considered approximate. This drawing was prepared by Plans4U for the sole benefit and use by the client. No third party may rely on this drawing without the receipt of reliance letter from Plans4U

UNIT #101
1033 SQUARE FEET
CEILING HEIGHT 10'

UNIT #101 LOWER
390 SQUARE FEET